

relevé



# Introducing Relevé

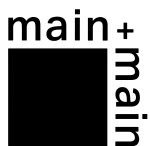
Relevé is a signature community for Ottawa's downtown core, raising the bar on downtown rental living. This beautifully designed two-tower community offers high-end, purpose-built studio, one-, two-, and three-bedroom rental suites. Elegantly designed, the 23- and 29-storey residential towers rise above a two-storey podium, seamlessly integrating ground-floor retail and street connectivity, offering a refined urban living experience.

Make Relevé your next home.

---

## About Centurion Property Associates Inc.

Centurion Property Associates Inc. is a leading provider of quality multi-residential apartments across Canada. Since day one, our goal has been to provide Residents and their families with clean, safe, and comfortable homes. We enhance our Residents' living experience by proactively attending to their needs and constantly seeking ways to elevate their rental experience.





# Table of Contents

- 04** Sophisticated Urban Living
- 05** The Relevé Experience
- 06** Convenience at Your Doorstep
- 08** Accommodation Options
- 13** Suite Essentials
- 14** Luxury Amenities







# Sophisticated *Urban Living*

Located at the corner of Albert and Lyon, Relevé is just a block away from the LRT (Lyon Station) for easy and quick movement around the city. Close to LeBreton Flats' Library District, and within walking distance to many of Ottawa's best downtown amenities and attractions.

Ottawa, Canada's capital city, offers an exceptional rental community experience, blending vibrant urban living with the charm of natural landscapes. Known for its diverse neighbourhoods and excellent public transit, Ottawa provides something for everyone. From the cultural downtown core to scenic parks and waterways like the Rideau Canal.

At Relevé, everyday living is elevated to something exceptional.







# The Relevé *Experience*

- 1. Location** – Minutes from Ottawa's vibrant downtown core, immerse yourself in a perfect blend of convenience and charm—where premier shopping, scenic parks, historic architecture, and seamless transit are right at your doorstep.
- 2. Luxury** – Every suite is designed with your Ottawa downtown lifestyle in mind. Luxury finishes include quartz countertops, in-suite washer and dryer, expansive terraces, spa-inspired bathrooms and more.
- 3. Amenities** – Enjoy luxury building amenities, including an aqua terrace with a pool, state-of-the-art fitness centre, entertainment zone and celebration suite.
- 4. Suite Selection** – A variety of suites to choose from to suit every lifestyle.



# Convenience at your *Doorstep*

## TRANSPORTATION

- 01 Parliament Station
- 02 Lyon Station
- 03 Pimisi Station

## PARKS

- 04 Lebreton Flats Park
- 05 Ottawa River Pathway
- 06 Pindigen Park
- 07 Tech Wall Dog Park
- 08 Dundonald Park

## SCHOOLS

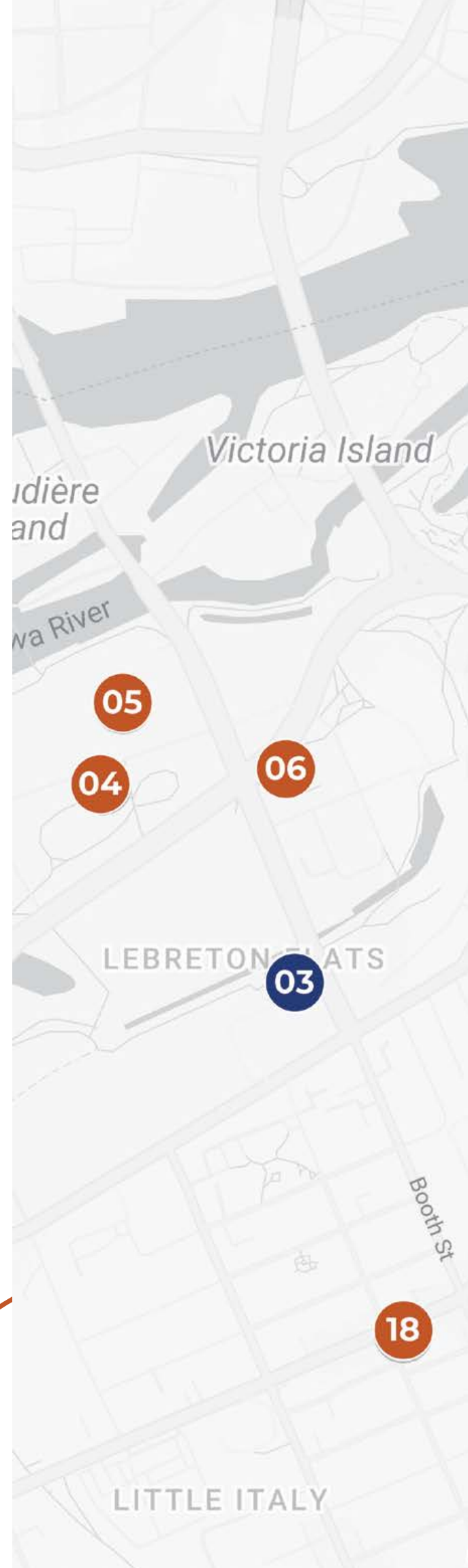
- 09 Centennial Public School
- 10 Elgin Street Public School

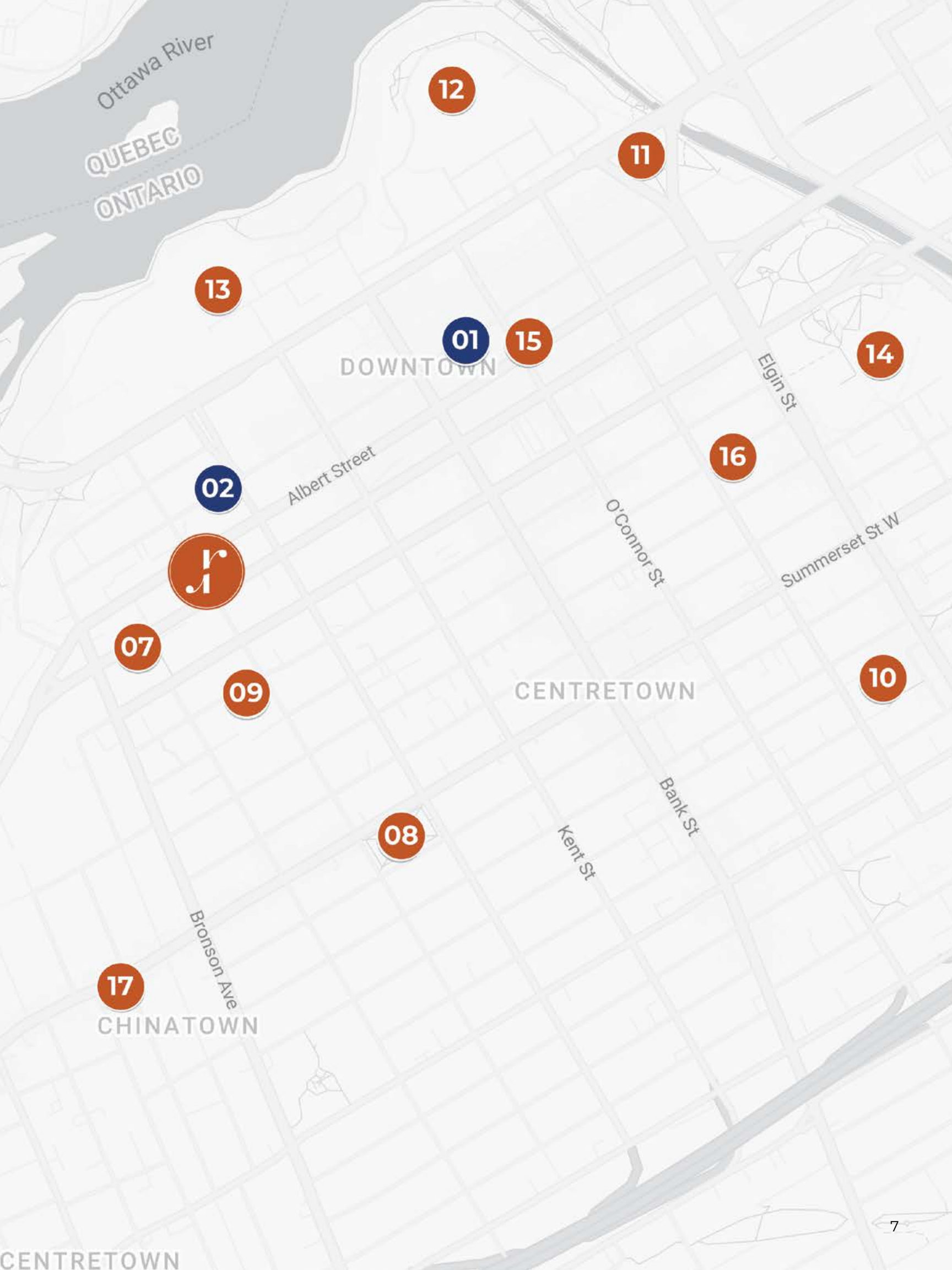
## LANDMARKS

- 11 The National War Memorial
- 12 Parliament of Canada
- 13 Supreme Court of Canada
- 14 Ottawa City Hall

## SHOPPING AND EATERY

- 15 Shoppers Drug Mart
- 16 Farmboy
- 17 Kowloon Market
- 18 Koichi Ramen





Ottawa River

QUEBEC  
ONTARIO

12

11

13

01

15

14

DOWNTOWN

Elgin St

16

02

Albert Street

O'Connor St

Summerset St W



07

09

CENTRETOWN

10

08

Bank St

Kent St

Bronson Ave

17

CHINATOWN

CENTRETOWN





# Accommodation *Options*

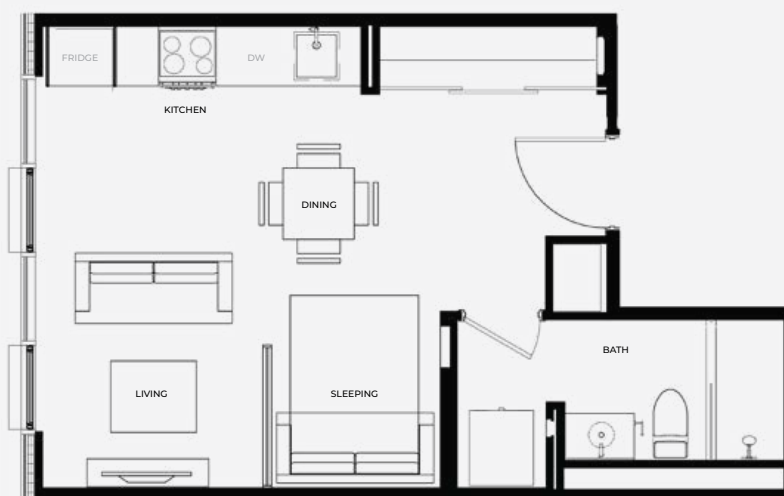
Discover rental suites designed with you in mind. Choose from a thoughtfully curated selection of studio, one-bedroom, one-bedroom + den, two-bedroom, and three-bedroom apartment suites, each crafted to enhance your living experience. Every suite at Relevé is thoughtfully designed with your lifestyle in mind.



Suite images shown represent standard unit finishes, which may differ between units and exclude furnishings.



## STUDIO SUITES



Not all suite types are represented. Ask your Leasing Specialist for more details.  
Suite images shown represent standard unit finishes, which may differ between units. Suite layout varies.

## 1-BEDROOM + DEN



Not all suite types are represented. Ask your Leasing Specialist for more details.  
Suite images shown represent standard unit finishes, which may differ between units. Suite layout varies.



## 2-BEDROOM SUITES



Not all suite types are represented. Ask your Leasing Specialist for more details.  
Suite images shown represent standard unit finishes, which may differ between units. Suite layout varies.

## 3-BEDROOM SUITES



Not all suite types are represented. Ask your Leasing Specialist for more details.  
Suite images shown represent standard unit finishes, which may differ between units. Suite layout varies.





## Suite *Essentials*

- ✦ **Elegant Kitchens:** Sleek islands with quartz countertops, generous storage, under-cabinet lighting, and a built-in microwave for a modern, functional cooking space.
- ✦ **Effortless Convenience:** Each suite is equipped with an in-suite washer and dryer.
- ✦ **Luxurious Bathrooms:** Experience spa-inspired details, including contemporary finishes and glass-enclosed, stand-up showers.
- ✦ **Enhanced Privacy and Security:** Key fob suite entry, and all windows feature blinds, with blackout shades in bedrooms.
- ✦ **Private Entertaining Spaces:** Select suites boast expansive terraces, complemented by refined finishes throughout, creating the perfect setting for hosting or relaxing.



# Luxury *Amenities*

- ✧ **Luxurious Rooftop Retreat:** Enjoy a premium outdoor living experience at Relevé's aqua terrace, featuring a stunning pool, BBQ stations, and plush lounge areas.
- ✧ **Exclusive Entertainment Zone:** Enjoy an exciting blend of amenities featuring a golf simulator, pool table, and private karaoke room alongside our state-of-the-art fitness centre and yoga studio.
- ✧ **Elegant Entertaining Spaces:** Sophisticated celebration suite, complete with a fully equipped catering kitchen.
- ✧ **Private Co-Working Hub:** Modern co-working space, offering open collaboration zones and sleek, private meeting rooms.









# relevé

Elevate Your Everyday



1-888-236-7767 | [www.releveottawa.com](http://www.releveottawa.com)